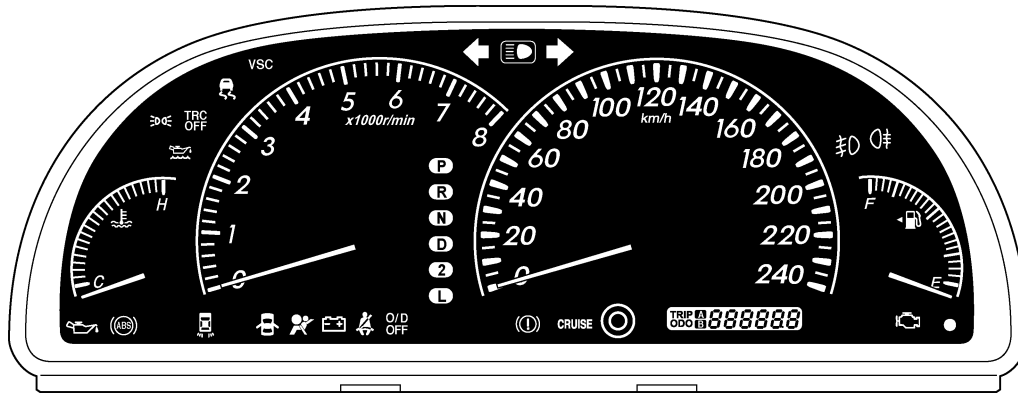


## ■ COMBINATION METER

### 1. General

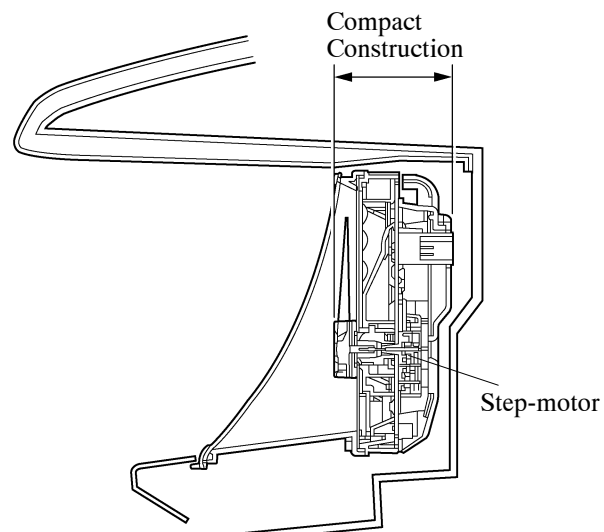
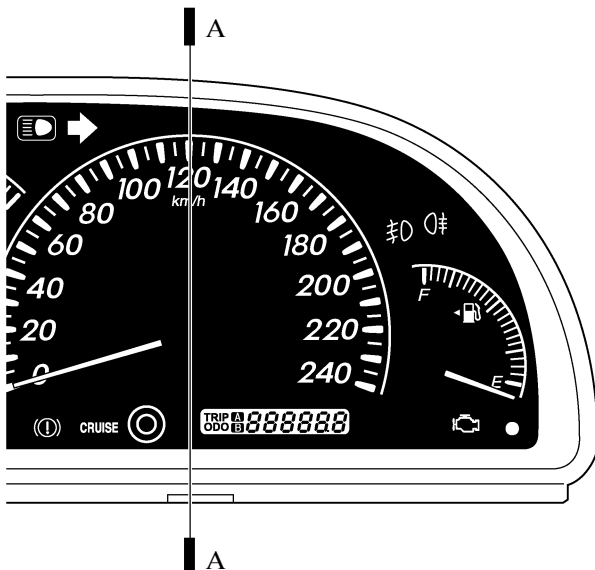
- An optitron display type combination meter has been newly provided as standard equipment on all models. The optitron display type meter realizes excellent visibility through the use of smoke acrylic in the protective panel, and LEDs (Light Emitting Diodes) that are very bright and have high contrast for illuminating the indicator and the dial.
- On the sports package model, an amber color has been adopted for the backlighting, in order to give the combination meter a sporty look.
- The movement for actuating the indicators in the meter has been changed from the cross coil type to a step-motor type. This has resulted in space-savings and weight reduction.



276CA11

### 2. Construction and Operation

- The indicator actuation movement for the speedometer and the tachometer has been changed from the cross coil type to step-motor type. This has resulted in a thinner indicator actuation movement, thus achieving a lightweight and compact construction.
- In the case of the step-motor type, when the power to combination meter is turned ON through the reconnection of the battery terminal, the step-motor initializes once to recognize the zero point of the indicator in relation to step-motor. Also, the step-motor is initialized again each time the combination meter starts operating.



A-A Cross Section

276CA17